

Mobile Client

Requirements:

The Mobile Client was developed to work on any Android device with a 2.2 or later platform. The application follows the same rules as any other Android application, it can simply be installed by downloading the APK and accepting the permissions to download it. Doing this, the application will be installed.

After installation, the application is ready to be opened; however, it needs to be linked to an account. To be able to fully take advantage of this system, you must first create the account online and have the refrigerator device at home linked to this account as well. This will enable the key features of the mobile application so that you can enjoy every element associated with creating shopping lists, recipes and your own inventory list.

If the application is not linked to any account, it will not be of any use to the operator since none of the menus will be accessible until an account is linked. This is necessary to access a current inventory added through the refrigerator application.

Mobile User Guide Contents

1. Main Screen
 - a. Accessing main menus
 - b. Notifications
2. Settings
3. Inventory
 - a. Browsing Items
 - b. Editing Items
 - c. Deleting Items
4. Shopping Lists
 - a. Adding a new shopping list
 - b. Adding items to a shopping list
 - c. Deleting items from a shopping list
 - d. Deleting a shopping list
5. Recipes
 - a. My Recipes
 - i. Browsing recipes
 - ii. Adding recipe to shopping list
 - b. Search
 - i. Adding a recipe to your collection
 - ii. Search All
 - iii. Search by keyword
6. Help

Help Menus are available on every section of the mobile application to assist the user while they are using each one of the features described below. This allows for a better understanding of the specific details involved in operating the application accurately. This manual aims to provide further assistance in understanding the system.

Main Screen

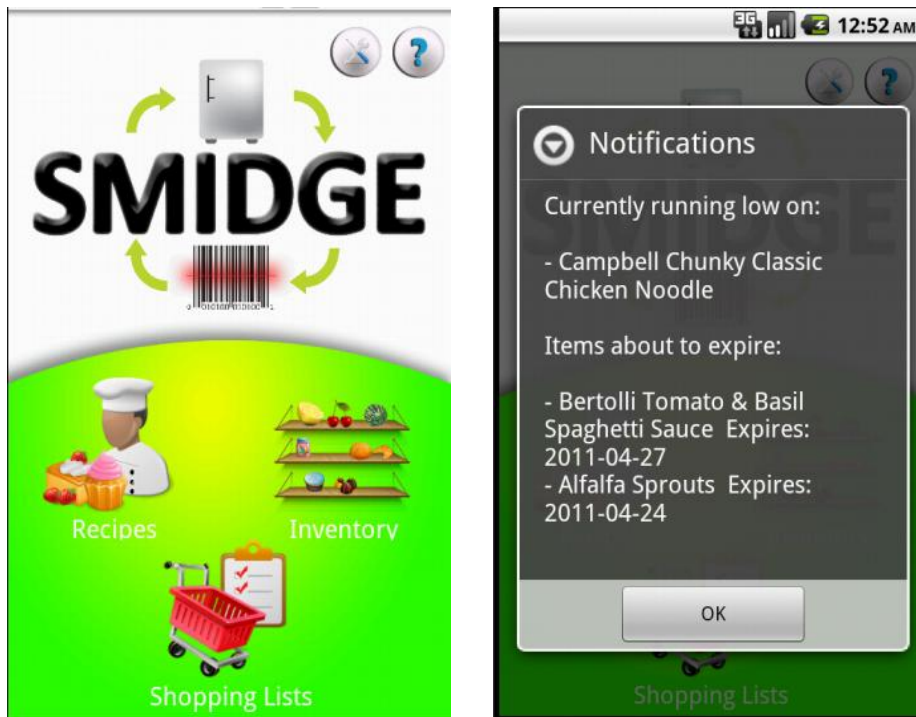


Figure 100: Mobile Main Screen and Notifications

The picture above on the left is what the main screen of the application looks like when it is first opened. At the top you will find two buttons: The one on the far right is the Help button and a button with tools representing the Settings page.

a. Accessing main menus

There are three choices after you enter the application:

- Inventory
- Recipe
- Shopping Lists

Clicking on any of these buttons will take you to their corresponding activity pages for more options.

Note: To be able to access any of the three menus, you must first go into settings and link your online account to the application.

b. Notifications

Once the application is linked to your account, a notifications dialog will appear on the screen every time the application is started to let you know of any of the items currently stored in your inventory that are approaching their expiration date or running low on amount.

As you can see in the image above and to the right, the notifications are shown and you can simply hit ok to hide them and go back to the main menu.

2. Settings

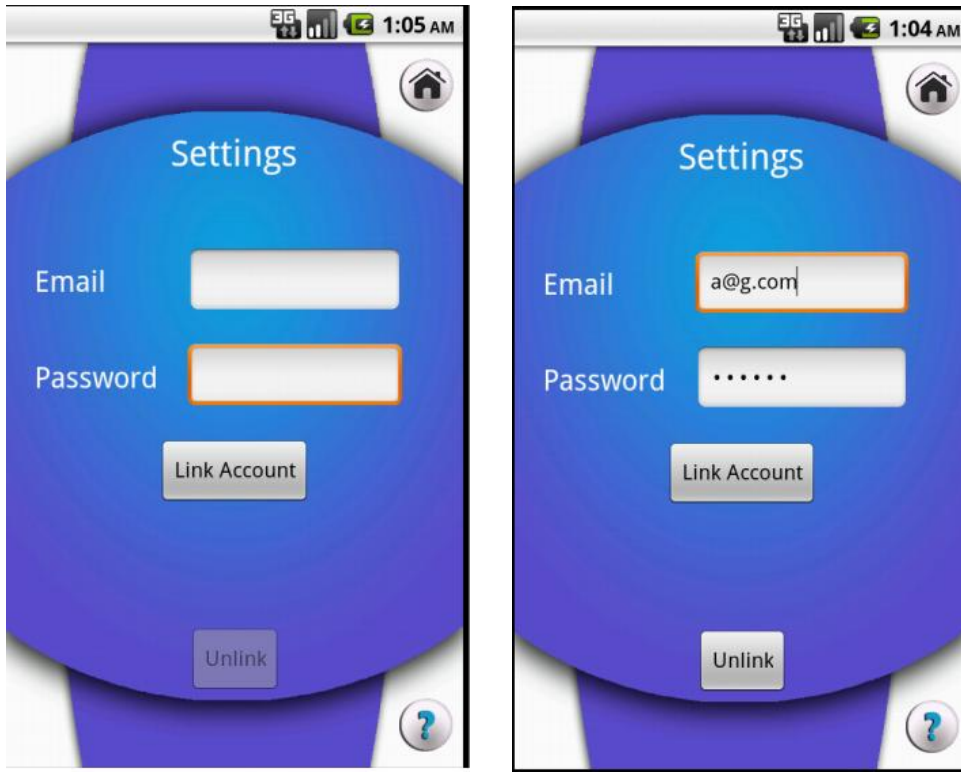


Figure 101: Settings Activity in Mobile Application

The settings activity can be accessed through the top button on the main screen only. This page will allow you to link your online account to your mobile application so that all your data will always be synchronized.

To link your account, simply fill in the two fields: 'Email' and 'Password' and click "Link Account". If the account is found and linked, the application will show a small notification on the bottom of the page and the button "unlink" will be enabled in case you ever want to start over or link a different account. If the information is incorrect, the fields will be cleared and a dialog will prompt you to retry the login.

On the top right, there is a home button to go back to the main screen, and on the bottom of the screen there is a help button that will give you an explanation of how this page works. These two buttons are common throughout the application. However, Android phones always have the 'back button' as one of their main features; this button can and will be used to navigate back and forth throughout the various screens in the application.

Note: The application will be of no use if there is no account linked on this setting page, since it won't be able to access any inventory or item information. When the account is not linked, attempting to access any of the main screen menus will only result in a message asking you to link your account first.

3. Inventory

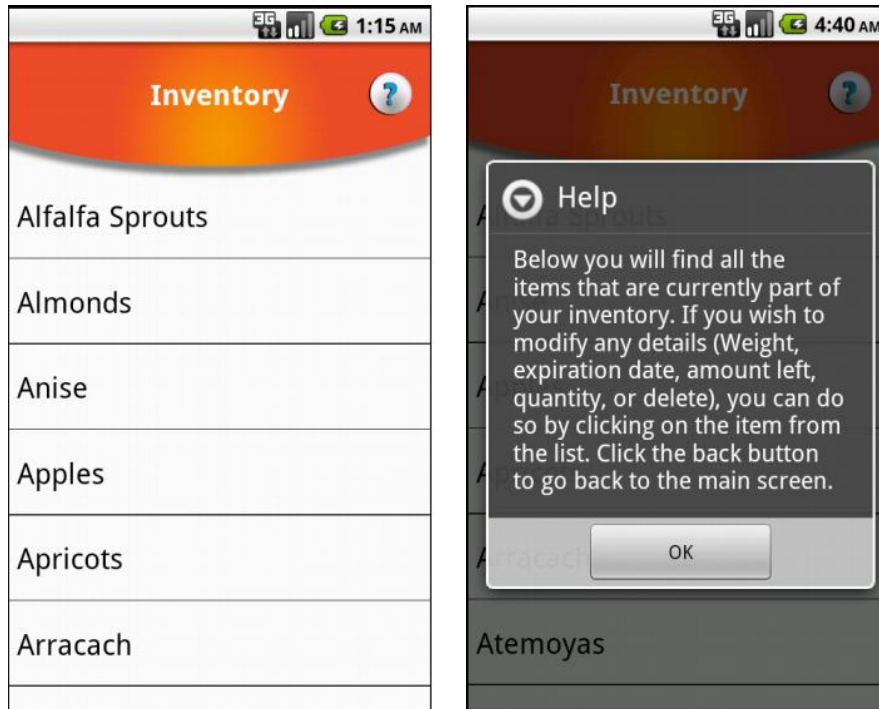


Figure 100: Mobile Main Screen and Notifications

The image above shows the general view of your item inventory. It is a simple list of all of the items that were added to your account. You can scroll down the list by swiping your finger up and down. To browse items, simply click on any of them to be taken to their detailed description.

a. Browsing Items



Figure 102: Mobile Applications Item Activity

By clicking on a specific item, you will encounter one of the two screenshots shown above. There are two types of items that you can have in your inventory: 'produce items' that don't provide a UPC barcode when scanning them, and general items that do have a code.

b. Editing Items

If you click on a produce item, you can see that it shows the corresponding image, name and quantity currently in your inventory. You can change the expiration date and quantity for each by clicking on the corresponding button (Images shown below).

For regular items, there are two additional fields shown: weight, and amount left icons. The weight shown is pulled from the database online; therefore, this is a static field only used for reference and cannot be changed. To change the amount left, you have to click on the corresponding icon: 100, 75, 50 or 'low' and it will automatically save all the changes.

c. Deleting Items

Delete the item by clicking on the item at the bottom and click ok on the confirmation dialog.



Figure 103: Mobile Application - Editing Item

To exit the item description, you can simply hit the back button on the phone and the application will return to the inventory screen where you can continue browsing the list of items in your inventory. If you wish to leave the inventory and go back to the main menu, hit the back button on the device once again.

4. Shopping Lists

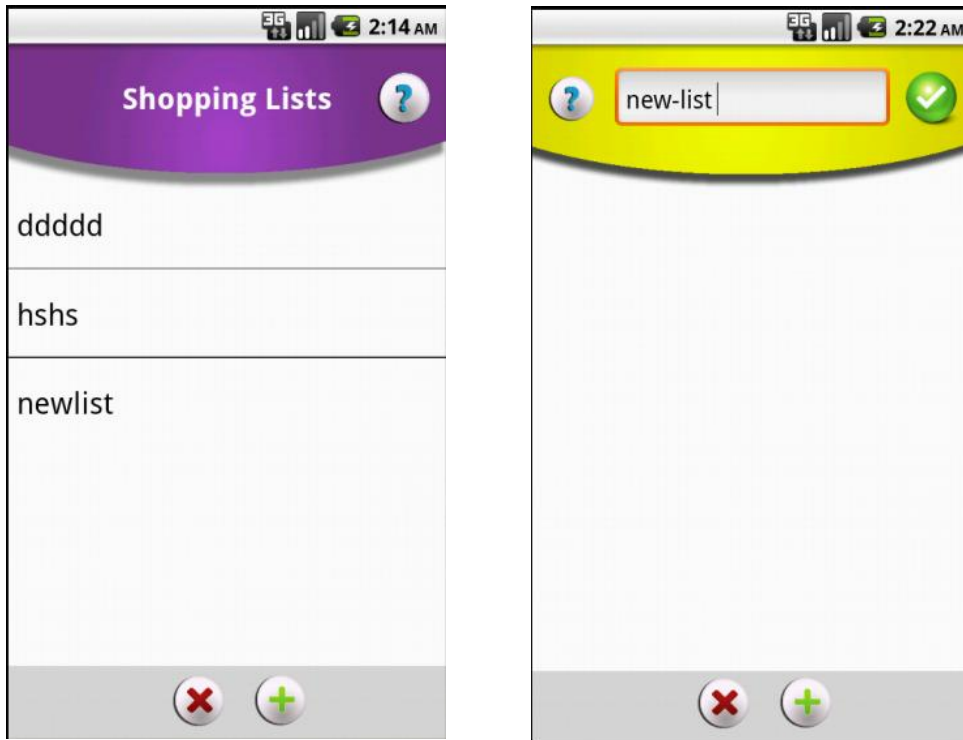


Figure 104: Mobile Application – Shopping Lists

From the main menu, if you click on the shopping lists button, you will see the screen shown above to the right. This is a list of all the shopping lists currently associated with your account. You can scroll through them the same way you did with the inventory by sweeping your finger across the screen. As you can see, this screen also has its help button in case you need some

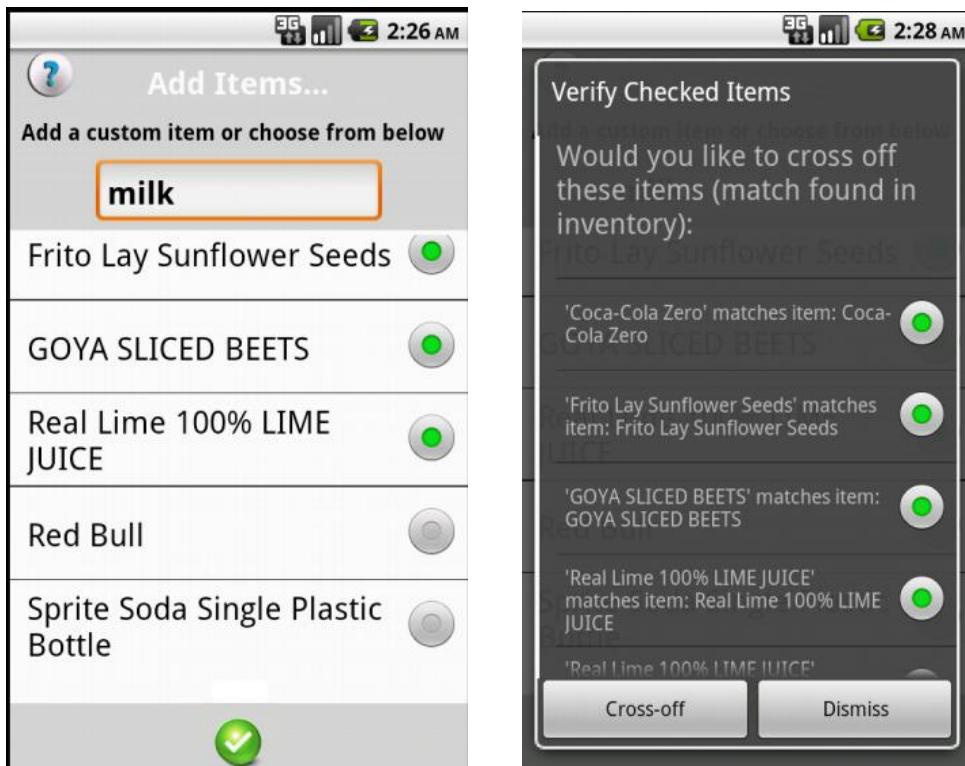


Figure 105: Mobile Application – Add items to shopping list

guidance. To add a new list, click on the '+' button at the bottom of the page.

b. Adding a new shopping list and adding items to a list

To add new items to a list, click on the '+' button on the shopping lists screen. This will take you to the screen above in which you will have a list of items to choose from (this list is extracted from the items that the system has stored before for you or other users). Also, you have the option to specify your own item in case you don't want to be too specific on brands.

To add the items to the list, check as many as you want or write an item in the text field, and hit the check box. Automatically, after you are done, if any matches of these items were found on your inventory, a dialog will come up asking you if you wish to cross these items off your list. You can do so by clicking the button 'cross-off', or dismiss this option altogether.

c. Deleting items from a shopping list

Deleting Items works in much the same way as adding them, except the list populated only contains the items that are currently on your list.

d. Deleting a shopping list

To delete a shopping list, go back to the main shopping list screen, where all of your shopping lists are shown and click on the 'X' button at the bottom of the page. A screen will show a list of the current lists you have associated with your account. Select all of the lists you wish to delete and click ok.

You can always press the back button at anytime if you do not wish to delete any of the items or wish to come back to the application's main menu.

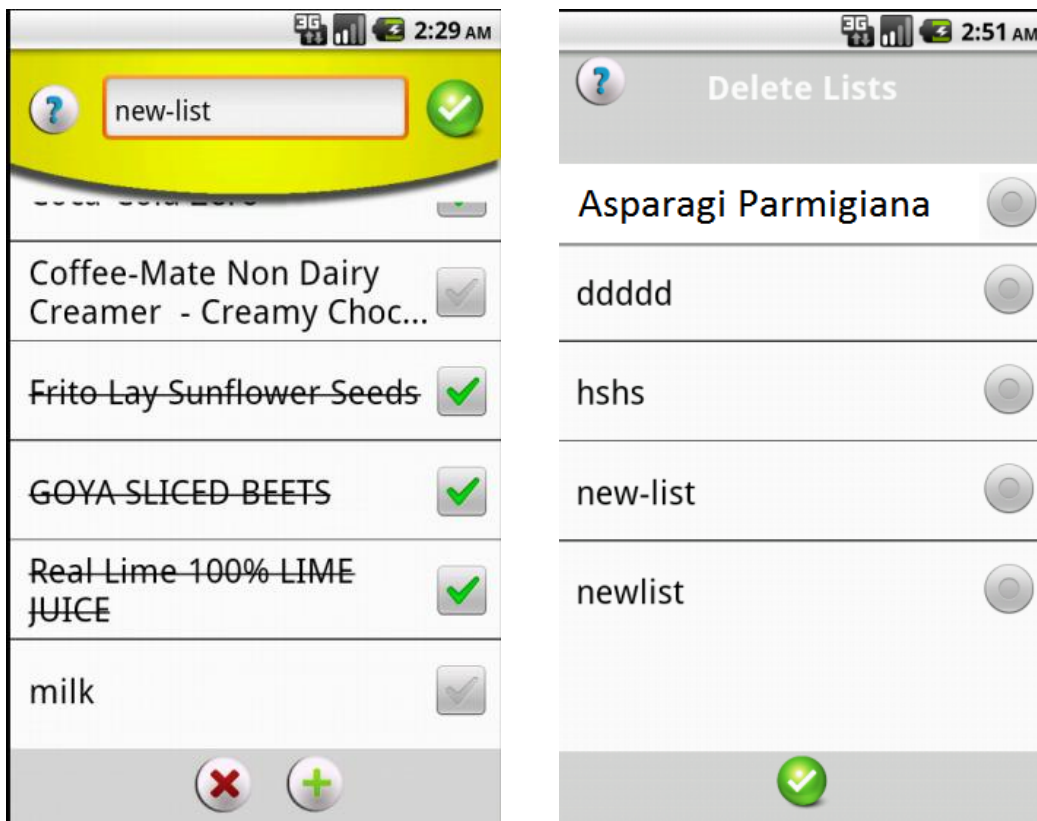


Figure 106: Mobile Application – Add new shopping list

5. Recipes

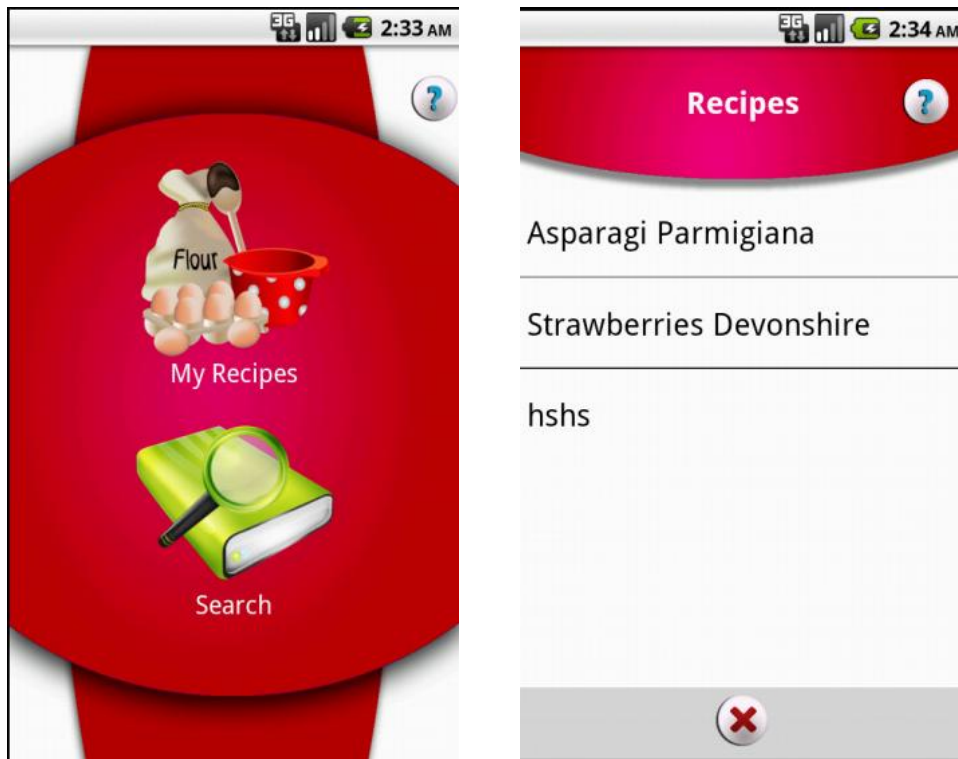


Figure 106: Mobile Application – Recipes

The main screen for recipes looks like the image above. You have two choices: browse your collection of recipes, or ‘search’ for recipes on the database. Also, as any of the other screens, you can click on the help button to get a brief description of this page

a. My Recipes

When you click on “My Recipes” you will see a screen similar to the ones we have seen before for inventory and shopping lists. It will contain a list of recipes currently associated with your account. Scroll down to browse through all of the recipes available (if the list is larger than the screen size).

i. Browsing recipes

To look at the details of any of the recipes in your repertoire, click on any one of them. The details will appear on a separate screen showing the ingredients and procedure for that recipe. Scroll down if the length of the procedure is larger than the screen.

ii. Adding recipe to shopping list

When looking at a recipe, there will be a button on the top left corner that has what looks like a check list and a ‘+’. If you click on this, it will allow you to add the ingredients in that specific recipe to a shopping list. This shopping list will have the name of the recipe selected and key ingredients are extracted and added. Before adding it, a confirmation screen will come up asking you if you really want to add it, click ok to proceed.

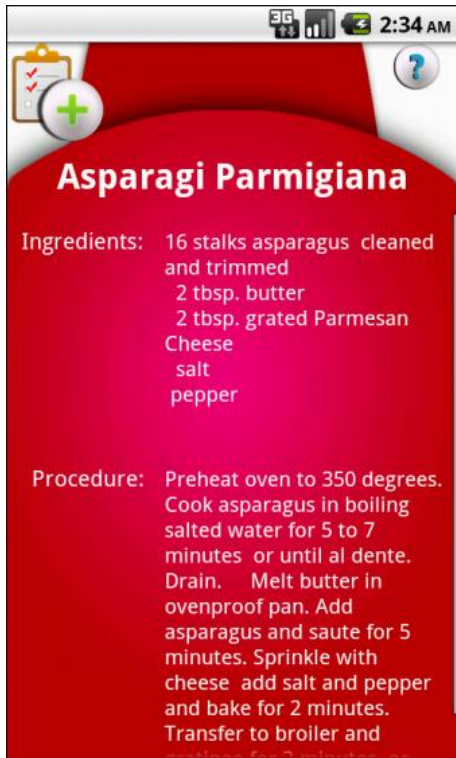


Figure 106: Mobile Application – Detailed Recipe

b. Search

The second choice on the recipes main screen allows you to search recipes in our database. When you click on this choice you will again be faced with two choices. You can either search the database by typing a keyword or key phrase; or view all the recipes available (more than 740 recipes in the database).



Figure 105: Mobile Application - Recipe Search

Either one of these choices will lead you to the same page. However, if you type in a keyword, only a subset of recipes will appear on the list in the screen. This screen is shown above to the right. For example, if you type in: 'apple', all of the recipes that contain the word apple will show up in the list. You are then free to scroll through the list and pick any of the recipes to look at its ingredients and procedure.

i. Adding a recipe to your collection

When you click on a recipe from the results found on your search, you have the option to add the recipe to your own recipe collection by clicking on the '+' button located at the top right corner of the screen. The system will then ask you if you want to confirm this action.

To delete a recipe, simply click on the 'X' button on the main recipes screen. Hit the back button at any time to go back to the main menu.

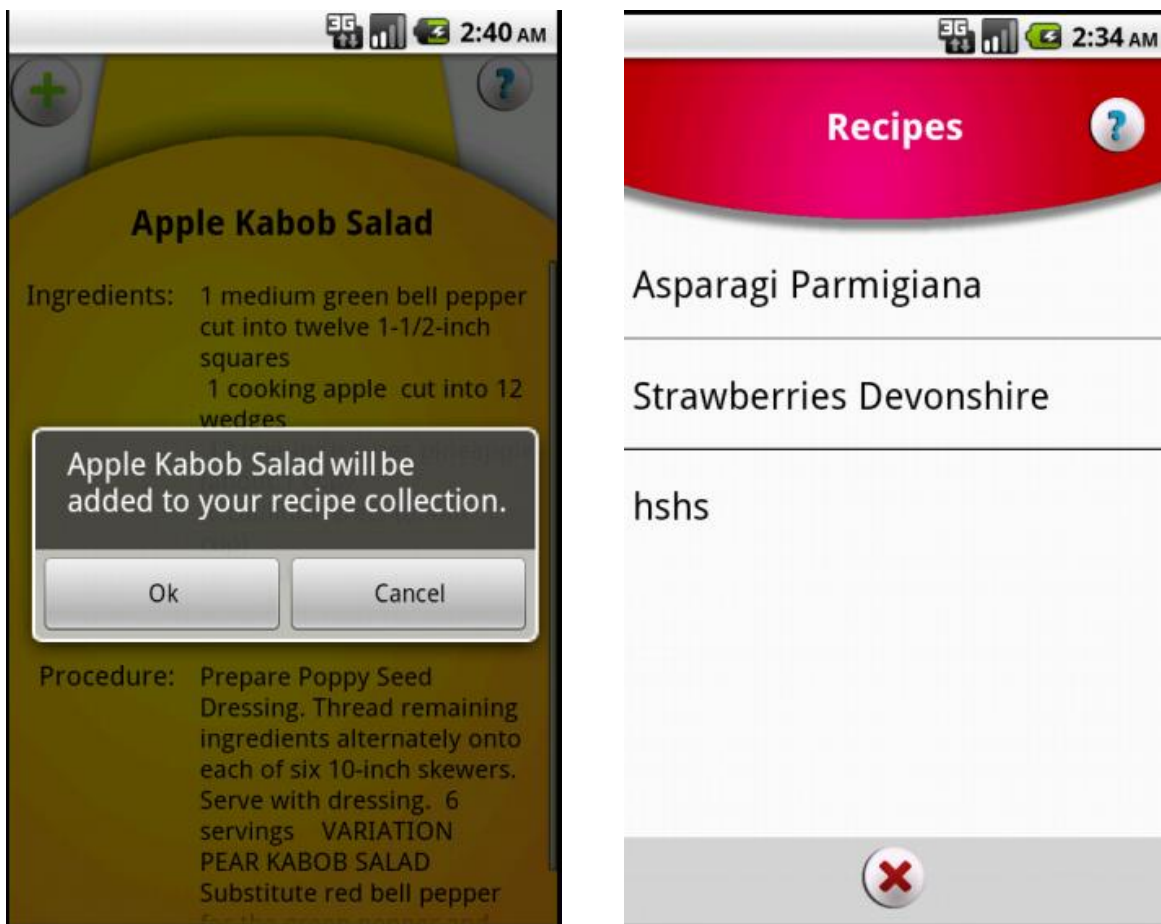


Figure 105: Mobile Application – Add recipe to My Recipes, delete

In general, all of the functions explored in this mobile application are extended and supported by the SMIDGE website and fridge application. The three components work together to give the best experience possible.